



# CLEVELAND DOG SOCIETY

Established 1857

Life President : Mrs. E. Pybus

Chairman : Mr. B. Rix

Schedule of 211 Class unbenched

## OPEN SHOW

Held under Kennel Club Limited & Regulations  
JUDGED ON THE GROUP SYSTEM

**ESTON SPORT ACADEMY,**  
NORMANBY ROAD, ESTON. TS6 9AE

**on SUNDAY 18th FEBRUARY, 2024**

*Only undocked dogs and legally docked dogs may be entered for exhibition at this show.*

Show Open 9.00 a.m.

**Judging 9.30 a.m. Prompt**

### Jurisdiction and Responsibilities

The Officers and Committee members of the society holding the licence are deemed responsible for organising and conducting the show safely and in accordance with the Rules and Regulations of the Kennel Club and agree to abide by and adopt any decision of the Board or any authority to whom the Board may delegate its powers subject to the conditions of Regulation F17. In so doing those appointed as officers and committee members accept that they are jointly and severally responsible for the organisation of the show and that this is a binding undertaking (vide Kennel Club General Show Regulations F4 and 5).

### Hon. Veterinary Surgeon

Vets MiNite Victoria Street, Middlesbrough. TS1 5QZ Tel. No. (01642) 134522



**INCREASED PRIZE MONEY IN ALL STAKES CLASSES**  
**SPONSORED BY DWELA ESTATE AGENTS**



**1st £10.00; 2nd £7.00; 3rd £6.00; Reserve £4.00 & VHC £3.00**

### **YKC & ADA Sponsored Classes**

**Entry Fees :** First Entry £5.50 Subsequent entries with same dog £1.00

**Membership Fees :** Single 75p - Joint £1.00 (Now Due)

**Catalogues :** £3.00 Prepaid Only

**Catalogues not collected by 12 Noon will be sold**

*All judges at this show agree to abide by the following statement:*

*"In assessing dogs, judges must penalise any features or exaggerations which they consider would be detrimental to the soundness, health and well being of the dog".*

**Postal entries close: SATURDAY 13th JANUARY, 2024 (Postmark)**

**On-line entries close: SATURDAY 3rd FEBRUARY, 2024 (Midnight)**

**To enter online go to - [www.cavalierimpressions.co.uk](http://www.cavalierimpressions.co.uk)**

**Entries to be sent to Secretary :**

**MISS A. WALKER,**

**19 Planetree Court, Marton, Middlesbrough. TS7 8QT**

**Mobile No. 07974748434**

**A FEE OF £10.00 WILL BE LEVIED FOR DISHONoured CHEQUES**

## CLASSIFICATION

All classes are for DOGS and BITCHES unless otherwise stated.

### WORKING GROUP - RING 1

#### RING 4

1 NEWFOUNDLAND POST GRADUATE

#### RING 1

3 GREAT DANE GRADUATE  
4 GREAT DANE OPEN  
5 ROTTWEILER GRADUATE  
6 ROTTWEILER OPEN  
7 SIBERIAN HUSKY GRADUATE  
8 SIBERIAN HUSKY POST GRADUATE  
9 SIBERIAN HUSKY OPEN  
10 ALASKAN MALAMUTE OPEN  
11 BOXER GRADUATE

JUDGE:- MR. B. TEMPLETON (HUMESTON)

2 NEWFOUNDLAND OPEN

JUDGE:- DR. G. GIAMBONA (TRINASHORES)

12 BOXER OPEN  
13 DOGUE DE BORDEAUX GRADUATE  
14 DOGUE DE BORDEAUX OPEN  
15 DOBERMANN OPEN  
16 BERNESE MOUNTAIN DOG OPEN  
17 LEONBERGER OPEN  
18 A.V.N.S.C. WORKING PUPPY  
19 A.V.N.S.C. WORKING OPEN  
20 AV WORKING IMPORT REG OPEN

**BEST IN GROUP & BPIG WILL NOW BE JUDGED BY DR. G. GIAMBONA (TRINASHORES)**

21 A.V. WORKING PUPPY  
22 A.V. WORKING JUNIOR  
23 A.V. WORKING GRADUATE

24 A.V. WORKING OPEN  
25 A.V. WORKING VETERAN

### PASTORAL GROUP

#### RING 2

26 BEARDED COLLIE GRADUATE  
27 BEARDED COLLIE POST GRADUATE  
28 BEARDED COLLIE OPEN  
29 PYRENEAN MOUNTAIN DOG GRADUATE  
30 PYRENEAN MOUNTAIN DOG OPEN  
31 OLD ENGLISH SHEEPDOG GRADUATE  
32 OLD ENGLISH SHEEPDOG OPEN  
33 SHETLAND SHEEPDOG GRADUATE  
34 SHETLAND SHEEPDOG OPEN  
35 BRIARD OPEN  
36 BORDER COLLIE OPEN

JUDGE:- MS. K. BIRD (PILGRIMSWAY)

37 BSD TERVUEREN OPEN  
38 BSD GROENENDAEL OPEN  
39 SAMOYED OPEN  
40 PEMBROKE CORGI OPEN  
41 HUNGARIAN PULI OPEN  
42 HUNGARIAN PUMI OPEN  
43 GERMAN SHEPHERD DOG OPEN  
44 ROUGH COLLIE OPEN  
45 A.V.N.S.C. PASTORAL PUPPY  
46 A.V.N.S.C. PASTORAL OPEN  
47 AV PASTORAL IMPORT REG OPEN

**BEST IN GROUP & BPIG WILL NOW BE JUDGED BY MS. K. BIRD**

48 A.V. PASTORAL PUPPY  
49 A.V. PASTORAL JUNIOR  
50 A.V. PASTORAL GRADUATE

51 A.V. PASTORAL OPEN  
52 A.V. PASTORAL VETERAN

### TOY GROUP

#### RING 6

53 MINIATURE PINSCHER PUPPY  
54 MINIATURE PINSCHER POST GRAD.

JUDGE:- DR. A. SCHEMEL (BENTWOOD)

55 MINIATURE PINSCHER OPEN

#### RING 3

56 C.K.C.S. PUPPY  
57 C.K.C.S. GRADUATE  
58 C.K.C.S. OPEN  
59 PUG PUPPY  
60 PUG POST GRADUATE  
61 PUG LIMIT  
62 PUG OPEN  
63 JAPANESE CHIN GRADUATE  
64 JAPANESE CHIN OPEN  
65 KING CHARLES SPANIEL GRADUATE  
66 KING CHARLES SPANIEL OPEN  
67 PAPILLON GRADUATE  
68 PAPILLON OPEN

JUDGE:- MR. T. NEMETH

69 CHIHUAHUA S/C OPEN  
70 CHIHUAHUA L/C OPEN  
71 ENGLISH TOY TERRIER OPEN  
72 COTON DE TULEAR OPEN  
73 LOWCHEN OPEN  
74 PEKINGESE OPEN  
75 CHINESE CRESTED OPEN  
76 ITALIAN GREYHOUND OPEN  
77 AFFENPINSCHER OPEN  
78 BICHON FRISE OPEN  
79 GRIFFON BRUXELLOIS GRADUATE  
80 GRIFFON BRUXELLOIS OPEN  
81 POMERANIAN OPEN

JUDGE:- MR. B. TEMPLETON (HUMESTON)

82 A.V.N.S.C. TOY PUPPY  
83 A.V.N.S.C. TOY OPEN

84 AV TOY IMPORT REGISTER OPEN

**BEST IN GROUP & BPIG WILL NOW BE JUDGED BY MR. B. TEMPLETON**

85 A.V. TOY PUPPY  
86 A.V. TOY JUNIOR  
87 A.V. TOY GRADUATE

88 A.V. TOY OPEN  
89 A.V. TOY VETERAN

### **UTILITY GROUP - RING 4**

**JUDGE:- MRS. A. CAWThERA-PURDY**

90	FRENCH BULLDOG	GRADUATE	105	CHOW CHOW	GRADUATE
91	FRENCH BULLDOG	OPEN	106	CHOW CHOW	OPEN
92	DALMATIAN	GRADUATE	107	BULLDOG	OPEN
93	DALMATIAN	POST GRADUATE	108	MINIATURE SCHNAUZER	OPEN
94	DALMATIAN	OPEN	109	STANDARD POODLE	OPEN
95	SHIH TZU	GRADUATE	110	MINIATURE POODLE	OPEN
96	SHIH TZU	OPEN	111	TOY POODLE	OPEN
97	LHASA APSO	GRADUATE	112	BOSTON TERRIER	OPEN
98	LHASA APSO	OPEN	113	AKITA	OPEN
99	TIBETAN TERRIER	GRADUATE	114	TIBETAN SPANIEL	OPEN
100	TIBETAN TERRIER	OPEN	115	KEESHOND	OPEN
101	GERMAN SPITZ (KLEIN)	GRADUATE	116	A.V.N.S.C. UTILITY	PUPPY
102	GERMAN SPITZ (KLEIN)	OPEN	117	A.V.N.S.C. UTILITY	OPEN
103	GERMAN SPITZ (MITTEL)	GRADUATE	118	AV UTILITY IMPORTED REG	OPEN
104	GERMAN SPITZ (MITTEL)	OPEN			

**BEST IN GROUP & BPIG WILL NOW BE JUDGED BY MRS. A. CAWThERA-PURDY**

119	A.V. UTILITY	PUPPY	122	A.V. UTILITY	OPEN
120	A.V. UTILITY	JUNIOR	123	A.V. UTILITY	VETERAN
121	A.V. UTILITY	GRADUATE			

### **GUNDOG GROUP - RING 5**

**JUDGE:- MS. K. LEGG**

124	COCKER SPANIEL	GRADUATE	139	HUNGARIAN VIZSLA	POST GRADUATE
125	COCKER SPANIEL	POST GRADUATE	140	HUNGARIAN VIZSLA	OPEN
126	COCKER SPANIEL	OPEN	141	AMERICAN COCKER	GRADUATE
127	GOLDEN RETRIEVER	GRADUATE	142	AMERICAN COCKER	OPEN
128	GOLDEN RETRIEVER	POST GRADUATE	143	WEIMARANER	GRADUATE
129	GOLDEN RETRIEVER	LIMIT	144	WEIMARANER	OPEN
130	GOLDEN RETRIEVER	OPEN	145	BRACCO ITALIANO	GRADUATE
131	LABRADOR RETRIEVER	GRADUATE	146	BRACCO ITALIANO	OPEN
132	LABRADOR RETRIEVER	OPEN	147	WELSH SPRINGER SPANIEL	OPEN
133	ENGLISH SPRINGER SPANIEL	GRADUATE	148	SUSSEX SPANIEL	OPEN
134	ENGLISH SPRINGER SPANIEL	OPEN	149	FLAT COATED RETRIEVER	OPEN
135	POINTER	PUPPY	150	IRISH SETTER	OPEN
136	POINTER	POST GRADUATE	151	GERMAN SHORTHAIRED POINT	OPEN
137	POINTER	OPEN	152	GERMAN WIREHAIRIED POINTE	OPEN
138	HUNGARIAN VIZSLA	PUPPY			

**JUDGE:- DR. G. GIAMBONA (TRINASHORES)**

153	A.V.N.S.C. GUNDOG	PUPPY	155	AV GUNDOG IMPORT REGISTE	OPEN
154	A.V.N.S.C. GUNDOG	OPEN			

**BEST IN GROUP & BPIG WILL NOW BE JUDGED BY DR. G. GIAMBONA**

156	A.V. GUNDOG	PUPPY	159	A.V. GUNDOG	OPEN
157	A.V. GUNDOG	JUNIOR	160	A.V. GUNDOG	VETERAN
158	A.V. GUNDOG	GRADUATE			

### **TERRIER GROUP**

**RING 6 (following Miniature Pinscher)**

**JUDGE:- DR. A. SCHEMEL (BENTWOOD)**

161	BORDER TERRIER	GRADUATE	168	BEDLINGTON TERRIER	GRADUATE
162	BORDER TERRIER	POST GRADUATE	169	BEDLINGTON TERRIER	OPEN
163	BORDER TERRIER	OPEN	170	FOX TERRIER (WIRE)	OPEN
164	S.B.T.	GRADUATE	171	WHWT	OPEN
165	S.B.T.	OPEN	172	A.V.N.S.C. TERRIER	PUPPY
166	MINIATURE BULL TERRIER	GRADUATE	173	A.V.N.S.C. TERRIER	OPEN
167	MINIATURE BULL TERRIER	OPEN	174	AV TERRIER IMPORT REGISTE	OPEN

**BEST IN GROUP & BPIG WILL NOW BE JUDGED BY DR. A. SCHEMEL**

175	A.V. TERRIER	PUPPY	178	A.V. TERRIER	OPEN
176	A.V. TERRIER	JUNIOR	179	A.V. TERRIER	VETERAN
177	A.V. TERRIER	GRADUATE			

## **HOUD GROUP**

### **RING 6 (following Terriers)**

**JUDGE:- MR. B. TEMPLETON (HUMESTON)**

180 BEAGLE	PUPPY	191 RHODESIAN RIDGEBACK	OPEN
181 BEAGLE	POST GRADUATE	192 IRISH WOLFHOUND	POST GRADUATE
182 BEAGLE	OPEN	193 IRISH WOLFHOUND	OPEN
183 BASENJI	GRADUATE	194 BORZOI	OPEN
184 BASENJI	OPEN	195 DEERHOUND	OPEN
185 WHIPPET	PUPPY	196 BGV (PETIT)	OPEN
186 WHIPPET	POST GRADUATE	197 BASSET FAUVE DE BRETAGNE	OPEN
187 WHIPPET	OPEN	198 A.V.N.S.C. HOUND	PUPPY
188 AV DACHSHUND	GRADUATE	199 A.V.N.S.C. HOUND	OPEN
189 AV DACHSHUND	OPEN	200 AV HOUND IMPORT REGISTER	OPEN
190 RHODESIAN RIDGEBACK	GRADUATE		

**BEST IN GROUP & BPIG WILL NOW BE JUDGED BY MR. B. TEMPLETON**

201 A.V. HOUND	PUPPY	204 A.V. HOUND	OPEN
202 A.V. HOUND	JUNIOR	205 A.V. HOUND	VETERAN
203 A.V. HOUND	GRADUATE		

**BEST IN SHOW, BEST PUPPY IN SHOW & BEST VETERAN IN SHOW WILL NOW BE JUDGED BY DR. A. SCHEMEL**

### **STAKES CLASSES**

**JUDGE:- DR. A. SCHEMEL (BENTWOOD)**

**INCREASED PRIZE MONEY ~ in THE STAKES CLASSES**  
**1st £10.00 ~ 2nd £7.00 ~ 3rd 6.00 ~ 4th £4.00 ~ 5th £3.00**

- 206 ANY VARIETY PUPPY STAKES
- 207 ANY VARIETY JUNIOR STAKES
- 208 ANY VARIETY GRADUATE STAKES
- 209 ANY VARIETY LIMIT STAKES
- 210 ANY VARIETY OPEN STAKES
- 211 NOT FOR COMPETITION

**HANDLING CLASSES (RING 5 following Gundog AV Veteran) - JUDGE:- MS. K. LEGG**

#### **YKC HANDLING CLASSES CRUFTS QUALIFIER 2024**

- CLASS A AGES 6 - 11 YEARS
- CLASS B AGES 12 - 17 YEARS
- CLASS C AGES 18 - 24 YEARS



#### **ADULT HANDLING ASSOCIATION QUALIFIER 2024**

- CLASS D AGES 17 - 30
- CLASS E AGES 31 - 45
- CLASS F AGES 46 - 59
- CLASS G AGES 60+

Adult handling will qualify for the Semi Finals/Finals at Bath Championship Show in May 2024

**BEST VETERAN IN SHOW WILL BE JUDGED FROM THE A.V. CLASS WINNERS ONLY**

***PLEASE NOTE:- RUBBER MATS WILL BE PROVIDED***

PLEASE KEEP THIS VENUE CLEAN & TIDY SO WE CAN USE IT AGAIN *Thank you*

***THERE WILL BE CATERING AVAILABLE ON THE DAY***

**PLEASE NOTE** - The order of judging may be changed at the Discretion of the Show Management if and when a ring becomes vacant.

**A FEE OF £10.00 WILL BE LEVIED FOR DISHONOURD CHEQUES**

## **DEFINITIONS OF CLASSES**

(The word DOG includes both sexes)

In the following definitions, a Challenge Certificate includes any Show award that counts towards the title of Champion under the Rules of any governing body recognised by the Kennel Club.

Wins at Championship Shows in breed classes where Challenge Certificates are not on offer shall be counted as wins at Open Shows.

In the case of a dog owned in partnership and entered in Members' classes or competing for Members' Specials each partner must at the time of entry be a member of the Society.

In estimating the number of awards won, all wins up to and including the seventh day before the first closing date shall be counted when entering for any class i.e.: **Saturday 6<sup>th</sup> January, 2024**. Wins in Variety classes do not count for entry in Breed classes but when entering for Variety classes, wins in both Breed and Variety classes must be counted. First prizes awarded in any classes defined as Special do not count towards eligibility.

If an exhibitor reports before the judging of a class or classes that a dog has been entered which is ineligible, the exhibitor may choose one of the following options:-

(1) **WITHDRAWAL:** The dog may be withdrawn from competition subject to the conditions of Regulation F.(1).19

(2) **TRANSFER:** a) If a dog is ineligible for a class or classes as regards its breed, colour, sex, weight or height the Show Secretary shall transfer it to the equivalent class or classes for the correct breed, colour, sex, weight or height and, in the event of there being no equivalent class, Minor Puppy and Puppy excepted to the Open class for the correct breed, colour, sex, weight or height.

b) If an exhibit is entered incorrectly in a Minor Puppy Class, Puppy Class or Junior Class, which is over age but under 12 calendar months of age, 18 calendar months of age or 24 calendar months of age respectively the show secretary shall transfer the exhibit to the Puppy Class, Junior Class, or Yearling Class respectively for the correct breed, colour, sex, weight or height and in the event of there being no Puppy, Junior or Yearling Class to the Open Class for the correct breed, colour, sex, weight or height.

c) For any reason other than the above, the Show Secretary shall transfer it to the Open class for the correct breed, colour, sex, weight or height.

d) If an exhibit arrives late and misses a class, even if it is the only class in which the dog is entered, the dog may not be transferred to any other class.

<b>PUPPY</b>	For dogs of six and not exceeding twelve calendar months of age on the first day of the Show.
<b>JUNIOR</b>	For dogs of six and not exceeding eighteen calendar months of age on the first day of the Show.
<b>GRADUATE</b>	For dogs which have not won a Challenge Certificate/CACIB/CAC/Green Star or four or more First Prizes at Championship Shows in Graduate, Post Graduate, Minor Limit, Mid Limit, and Open classes, whether restricted or not where Challenge Certificates were offered for the breed.
<b>POST GRADUATE</b>	For dogs which have not won a Challenge Certificate/CACIB/CAC/Green Star or five or more First Prizes at Championship Shows in Post Graduate, Minor Limit, Mid Limit, Limit and Open classes, whether restricted or not where Challenge Certificates were offered for the breed.
<b>LIMIT</b>	For dogs which have not become show Champions under the Kennel Club Regulations or under the rules of any governing body recognised by the Kennel Club, or won 3 or more CC/CACIB/CAC/Green Stars or won 7 or more First Prizes in all, at Championship Shows in Limit and Open classes, confined to the breed, whether restricted or not, at Shows where Challenge Certificates were offered for the breed.
<b>OPEN</b>	For all dogs of the breeds for which the class is provided and eligible for entry at the Show.
<b>A.V. IMPORTED BREED REGISTER</b>	For breeds confined to the Imported Breeds Register and only when an interim breed standard has been published by the Kennel Club. Such breeds may be exhibited in this class with the Best Imported Register / Best Imported Register Puppy being eligible for Best in Group / Best Puppy in Group or Best in Show / Best Puppy in Show as relevant. Such breeds may be entered into Imported Breed Register classes and/or Any Variety or Stakes classes, with the exception of AVNSC classes, for which they are not eligible.
<b>VETERAN</b>	For all dogs of not less than seven years of age on the day of the Show.
<b>A.V.N.S.C.</b>	For breeds of dog for which no separate breed classes are scheduled.
<b>SPECIAL STAKES</b>	Open to all breeds of dogs.
<b>NOT FOR COMPETITION</b>	Societies may at their discretion, accept Not for Competition entries. Societies may accept such entries from breeds of dogs not included within the title of the Society and at Shows held over more than one day, such entries may be accepted on any day from any breed.

## RULES AND REGULATIONS

1. The Show will open at 9.00 a.m.
2. Dogs will be received at any time but it is the exhibitor's responsibility to ensure that exhibits are available for judging when required.
3. Judging will commence at 9.30 a.m.
4. Exhibits may be removed from the Show after their judging has been completed. The Show will close half an hour after all judging has been completed.
5. **ENTRY FEES:** £5.50 First Entry per Dog, £1.00p subsequent entries for SAME DOG. Handling Classes £2.00. Membership Fees: Joint £1.00, Single 75p.
6. **PRIZE MONEY:** Stakes Classes 1<sup>st</sup> £10.00; 2<sup>nd</sup> £7.00; 3<sup>rd</sup> £6.00; 4<sup>th</sup> £4.00; 5<sup>th</sup> £3.00.
7. The Committee reserves to itself the right to refuse entries.
8. Puppies under six calendar months of age on the first day of the Show are not eligible for exhibition.
9. The mating of bitches within the precincts of the Show is forbidden.
10. **BEST PUPPY IN SHOW:** Where a Best Puppy in Show competition is scheduled the Best Puppy in Show is a puppy which has competed and has been declared Best Puppy in Breed, Best Any Variety Not Separately Classified Puppy or Best Any Variety Imported Breed Register Puppy. A puppy is a dog of six and not exceeding twelve calendar months of age on the first day of the Show.  
Where the Best of Breed, Best in Group or Best in Show is a Puppy it may, at the discretion of the judge be Best Puppy in Breed, Best Puppy in Group and Best Puppy in Show respectively. Where the Reserve Best of Breed, Reserve Best of Group or Reserve Best in Show is a Puppy which has only been beaten by an adult dog it may, at the discretion of the judge be Best Puppy in Breed, Best Puppy in Group or Best Puppy in Show respectively. Consequently selection of Best Puppy in Breed, Best Puppy in Group & Best Puppy in Show must follow the selection of Best of Breed, Best in Group & Best in Show respectively.  
Best Puppy in Group and subsequent Group placings must be selected from:-
  - a) Those puppies declared Best Puppy in Breed.
  - b) The puppy declared Best Puppy from the Any Variety Not Separately Classified classes in each group or on each day.
  - c) The puppy declared Best Puppy from the Any Variety Imported Breed Register classes in each group or on each day.
11. **BEST IN SHOW:** The dog declared Best in Show is a dog which has competed and has been declared Best on Breed, Best Any Variety Not Separately Classified or Best Any Variety Imported Breed Register.
  - a) Shows Judged on the Group System. (Definition; Shows judged on the Group System included classes for breeds within more than one Group, as defined in the Kennel Club Regulations B (A); and require a judge to declare a best of each group after which the exhibits so declared will compete for the award of Best in Show and Reserve Best in Show).
    1. Best of Breed: Where a breed is separately classified a Best of Breed must be declared but only from those exhibits which have received a first prize in a breed class at the show. Where separate classes are provided for each sex of a breed a Best of each Sex must be declared.
    2. Best of Group and subsequent placings must be selected from:-
      - a) The Best of Breed winners in each Group.
      - b) The best unbeaten winning dog from the Any Variety not Separately Classified classes in each Group or on each day.
      - c) The Best dog from Any Variety Imported Breed Register classes in each Group or on each day.
    - 3) Best in Show: Best in Show must be selected from the Best of Group winners. Reserve Best in Show must be selected from the remaining Group winners following the selection for Best in Show.
12. Exhibits will not be admitted to Best in Show competition after a period of ten minutes has elapsed since the announcement that exhibits are required for judging, unless they have been unavoidably been delayed by previous judging not being completed on time, and then only with a special permission of the Show Management.
13. Exhibitors must not pick up dogs by their tails and leads when lifting them nor handle a dog in a manner which causes its feet not touch the ground when on the move. This is not acceptable. Exhibitors should note that such practice would constitute harsh handling and reports of such practice will be referred to the Committee under Kennel Club Show Regulation F11.
14. All exhibitors must be familiar with Kennel Club Regulation F (Annex B) Regulations for the Preparation of Dogs for Exhibition.
15. All dogs resident outside the UK must be issued with a Kennel Club Authority to Compete number before entry to the show/event can be made. All overseas entries without an Authority to Compete number will be returned to the exhibitor/competitor.
16. **DOGS IN VEHICLES ON HOT DAYS.** Your dog is vulnerable and at risk during hot weather and the Kennel Club offers the following guidance to help guide you through the do's and don'ts travelling to and whilst at KC licenced events.
  - When travelling to a show please take a moment to consider whether the route to the show is on a busy holiday route, and leave earlier to avoid increased time in traffic jams.
  - If your vehicle is not air-conditioned seriously consider whether travelling to the show is a good idea at all.

- The vehicle should be as fully ventilated as possible, and plenty of stops should be taken, with lots of water available to drink.
- Ensure your dog is not sitting in full sunlight. There should be plenty of free flowing air around the dog.
- When at the show, never leave your dog in the vehicle.
- Keep the dog in the shade – take your own shade for example a large umbrella and always have plenty of water available to drink so your dog stays well hydrated.
- Avoid your dog taking part in unnecessary exertion, or from standing in exposed sunlight for extended lengths of time.

Remember, if you feel hot your dog is very likely to feel much hotter and dehydrated, and this could lead to dire results. Please look after your dog's welfare.

**WARNING: IF YOUR DOG IS FOUND TO BE AT RISK FORCIBLE ENTRY TO YOUR VEHICLE MAY BE NECESSARY WITHOUT LIABILITY FOR ANY DAMAGE CAUSED.**

17. Anyone whose dog is entered at a Kennel Club licensed event should take all reasonable steps to ensure the needs of their dog(s) are met, and should not put a dog's health and welfare at risk by any action, default, omission or otherwise. Breach of Kennel Club Regulations in this respect may be referred to the Board for disciplinary action under Kennel Club Rules and Regulations. The use of pinch collars, electronic shock collars, or prong collars, is not permitted at any show licensed by the Kennel Club. This shall apply at the venue or within the precincts of the show.
18. Not for Competition entries will be accepted. Details of each dog so entered must be recorded on the entry form and must be Kennel Club registered.
19. No modifications will be made to the schedule except by permission of the Board of the Kennel Club, which will be followed by advertisement in the Canine press wherever possible.
20. Any owner, exhibitor, handler or other person in charge of a dog is required to move as soon as possible any fouling caused by their dogs at any Kennel Club licensed Show within the licensed venue and within the environs of that even including car and caravan approaches.
21. The Committee of the Show can accept no responsibility for products advertised or sold by stall holders at the Show and remind exhibitors that grooming products on sale may not meet the requirements of the regulations for the preparation of dogs for exhibition.
22. All gangways must be kept clear.
23. The use of mobile phones is not allowed within the vicinity of the rings.
24. Car Parking is FREE but the club will not be responsible for any damage caused.

### **SECURITY AT SHOWS**

In light of recent events the Kennel Club would like to issue a reminder to all societies of the importance of security at dog shows. The Kennel Club understand that due to the nature of dog shows and the quantity of paraphernalia exhibitors bring, it would be extremely difficult for show organisers to take on the issue of security alone, therefore we would re-iterate the advice being given by the Police and security services, that everyone in the UK should remain vigilant and this applies to those organizing and taking part in dog shows.

The importance of exhibitors feeling that they and their dogs are safe when attending a show cannot be underestimated. We would therefore remind you of the importance of the need for show organisers and exhibitors to remain mindful of potential dangers and that all visitors to shows generally need to be vigilant and alert. Furthermore the society provide robust notification informing exhibitors of where to report to should they see anything suspicious or of concern, and the evacuation procedures in place.

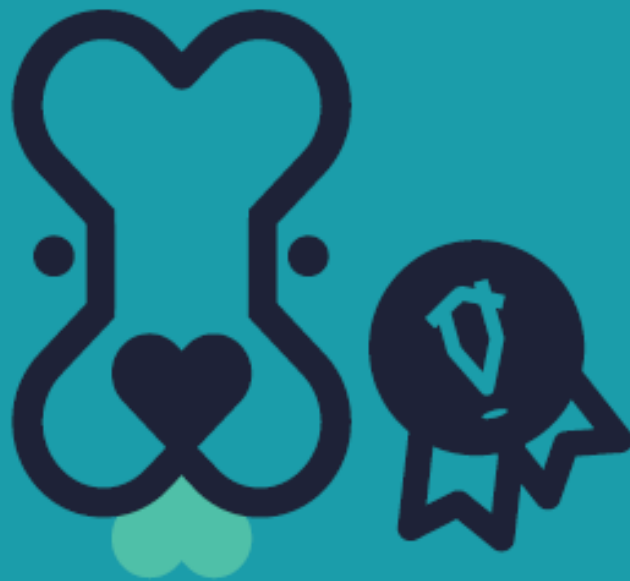
In view of the above, should you see anything suspicious or of concern, please alert the Show Manager, and/or the Show Secretary immediately. If it is a package or bag you are concerned about, please do NOT attempt to move it or examine it yourself.

Should it be necessary for the hall to be evacuated, please remember that evacuation should be carried out as speedily but as safely carried out as possible, as in the case of a fire. It is important that you do not block the exit routes with cages or bags. Please follow any instructions given to you by the Show Management regarding evacuation procedures.

### **PRIVACY & DATA PROTECTION**

Data Protection – Your privacy is important and personal data is held in accordance with our Privacy Notice which is available upon request from the Secretary.

# dwela – sponsors of The Stakes Classes at Cleveland Dog Society



Sell your property with dwela  
save thousands in fees, our great value  
sales package is £995\*



**dwela**

North east online estate agent - <https://dwela.uk>



\*Sellers package for £995.00 includes - Sale board, professional photography, floor-plans, EPC and property advert on Rightmove.  
Please note: a £250.00 non refundable deposit is required



**Compiled & Printed by CAVALIER IMPRESSIONS**

**Tel. No. (0191) 520 2930**

**Mobile No. 07891 766244**

**www.cavalierimpressions.co.uk email:- [information@cavalierimpressions.co.uk](mailto:information@cavalierimpressions.co.uk)**